

# FIRSTGARD™

## FOLDABLE CONE

### — HINGE AND BAND REPLACEMENT INSTRUCTIONS —



#### **CONTACT:**

Call 800.662.6338 to speak with a Customer Service Representative.

#### **HOURS:**

8 AM to 5 PM (E.T.)  
Monday through Friday



# TABLE OF CONTENTS

PAGE  
**03** | NYLON PIN  
REMOVAL

PAGE  
**07** | HINGE COMPONENT  
REPLACEMENT

PAGE  
**05** | NYLON PIN  
REPLACEMENT

PAGE  
**11** | BAND  
REPLACEMENT

## FIRSTGARD™ REPAIR KIT COMPONENTS

**1.**



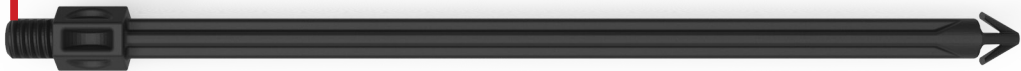
**2.**



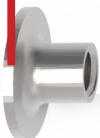
**3.**



**4.**



**5.**



**6.**



**7.**



**8.**



- 1.** Band - Quantity 1
- 2.** Hinge Component (Center) - Quantity 2
- 3.** Hinge Component (Offset) - Quantity 4
- 4.** Nylon Pin - Quantity 1
- 5.** Weld Nut - Quantity 1
- 6.** 10-24 Nylon Lock Nut - Quantity 6
- 7.** Roll Pin - Quantity 2
- 8.** 10-24 x 5/8" Screw - Quantity 6

# FIRSTGARD™ NYLON PIN REMOVAL

## NYLON PIN REMOVAL

### PARTS NEEDED FOR NYLON PIN REMOVAL



**Part A.**  
FirstGard  
Quantity - 1



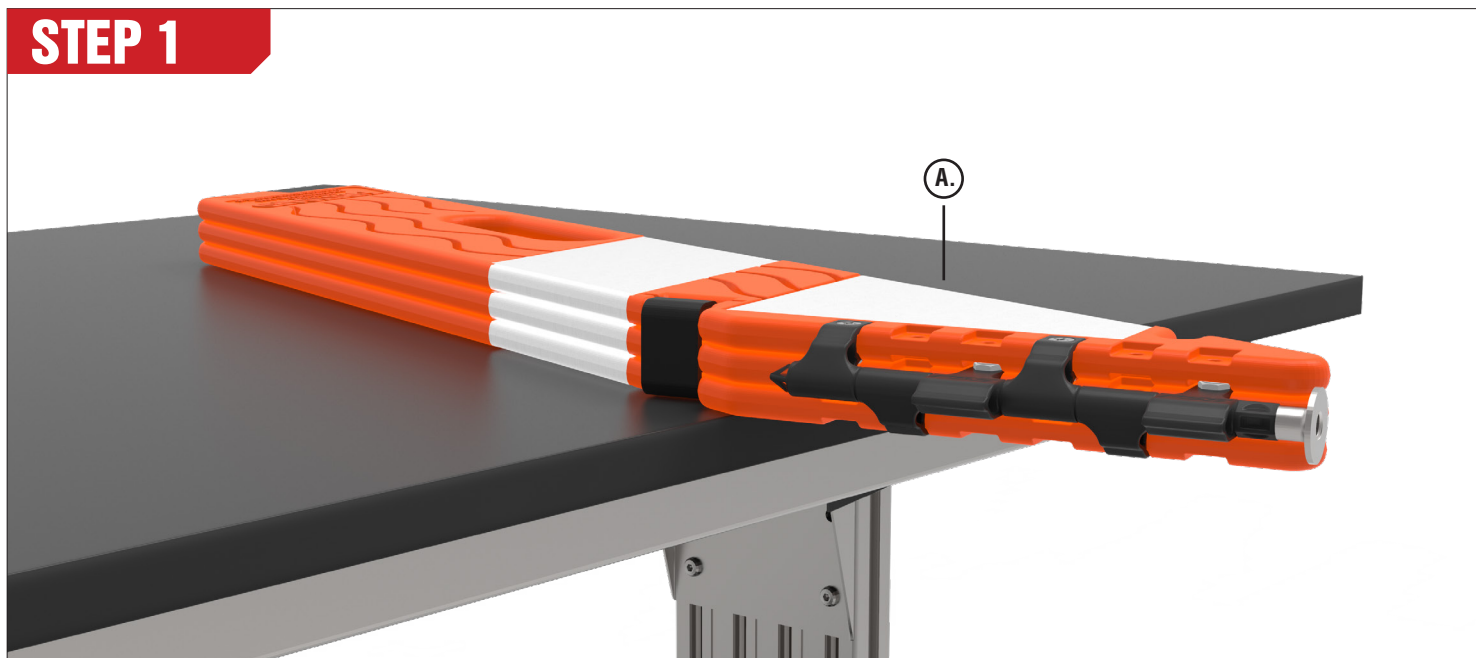
**Part B.**  
Weld Nut  
Quantity - 1



**Part C.**  
Nylon Pin  
Quantity - 1

### TOOLS REQUIRED - NEEDLE-NOSE PLIERS

## STEP 1

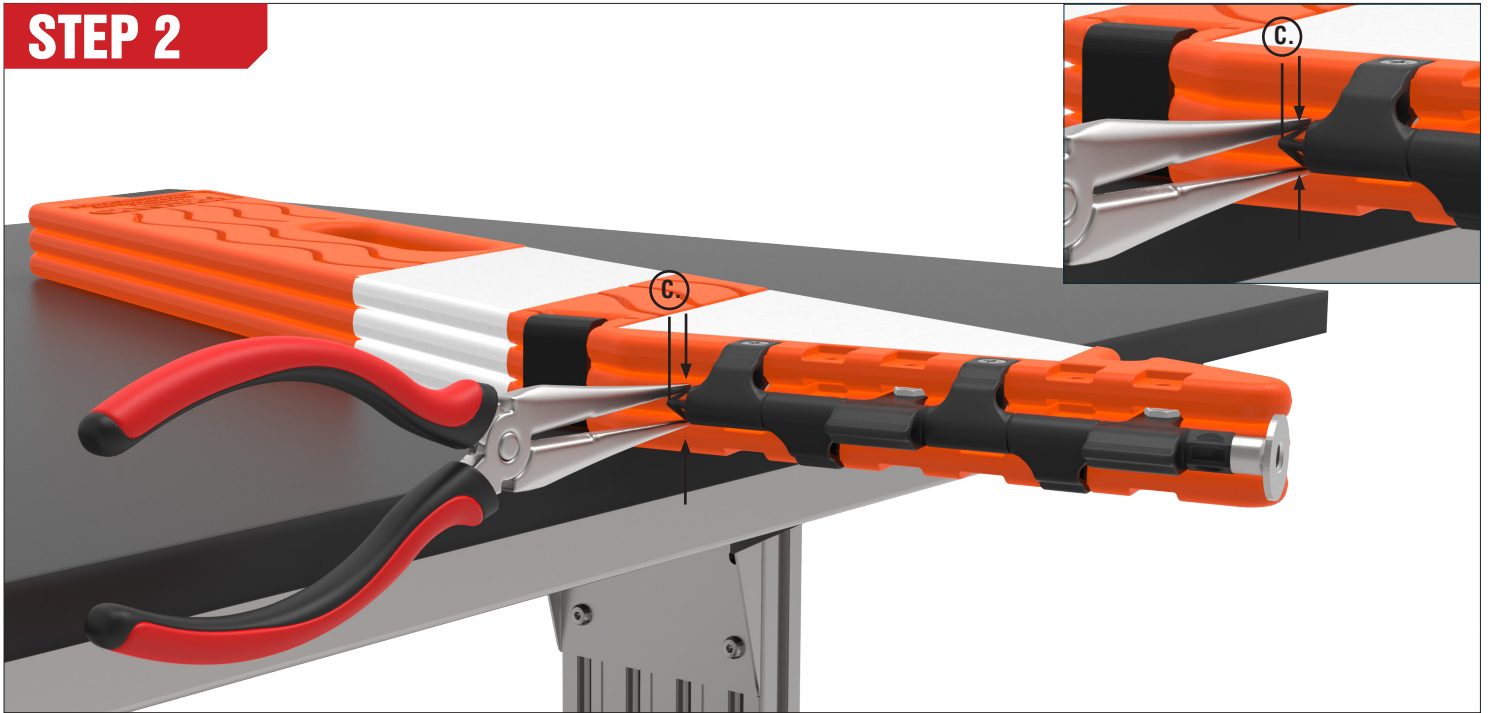


Place **FirstGard** (A) on table folded



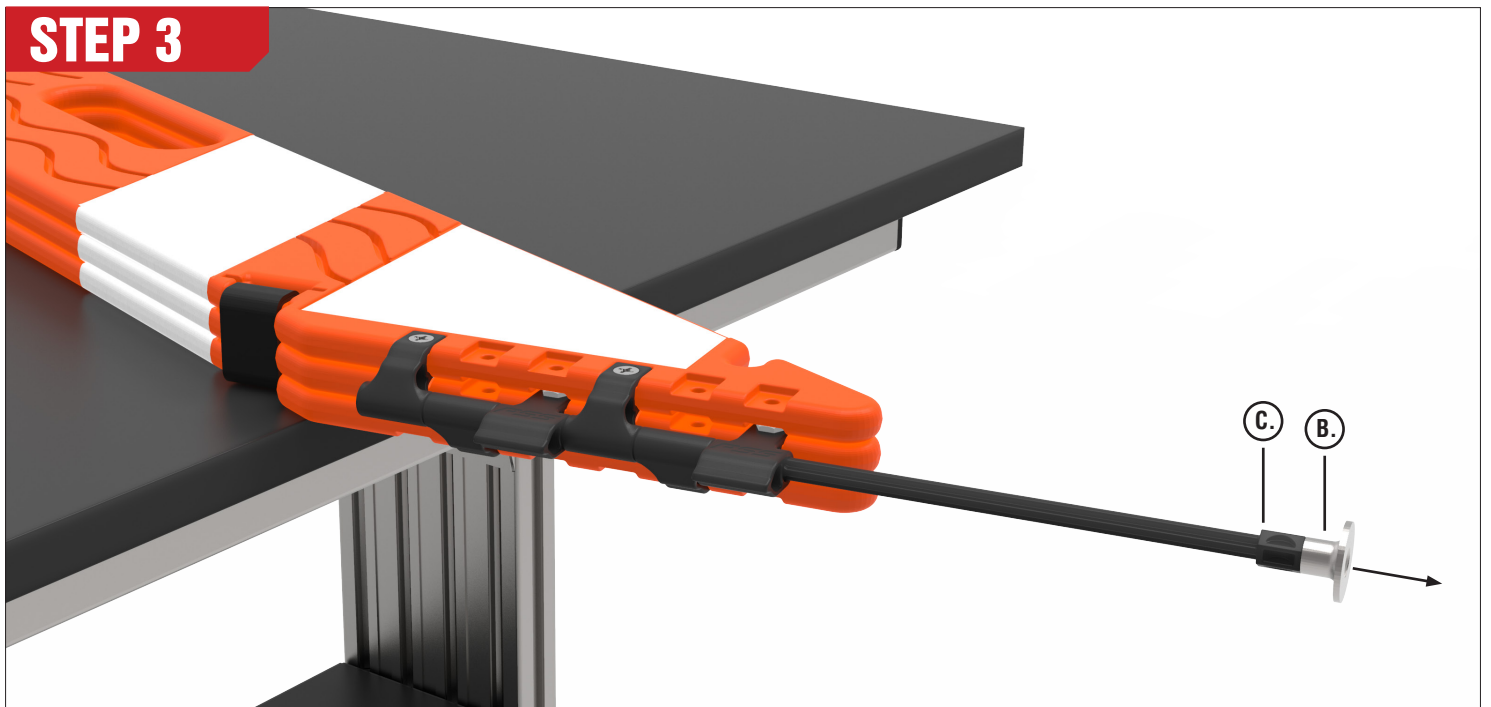
# FIRSTGARD™ NYLON PIN REMOVAL

## STEP 2



Using needle-nose pliers, squeeze the barbs on the **nylon pin** (C).

## STEP 3



Use the **weld nut** (B) on the top of the **nylon pin** (C) to pull the pin out. If the pin is in one piece and the barbs can still function, the nylon pin is still usable.



# FIRSTGARD™ PIN REPLACEMENT



## PIN REPLACEMENT

### PARTS NEEDED FOR FIRSTGARD HINGE REPLACEMENT



**Part A.**  
FirstGard Cone Panels  
Quantity - 1



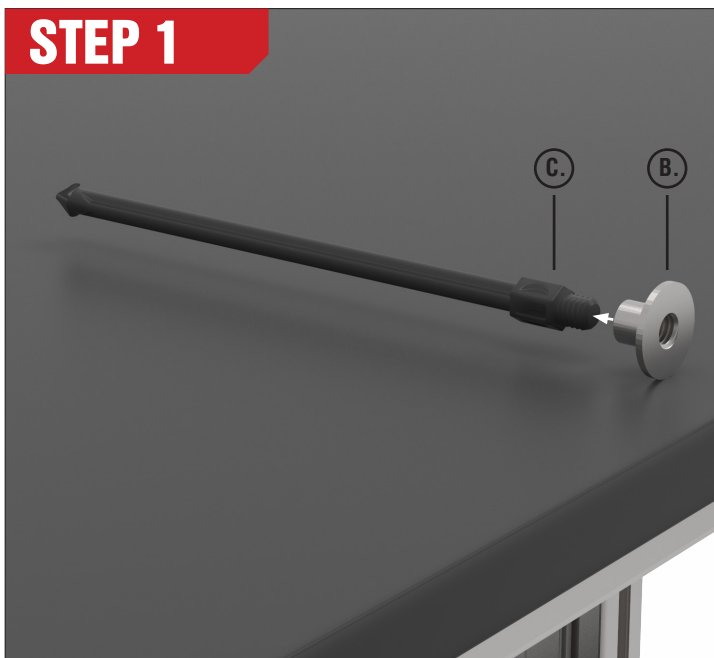
**Part B.**  
Weld Nut  
Quantity - 1



**Part C.**  
Nylon Pin  
Quantity - 1

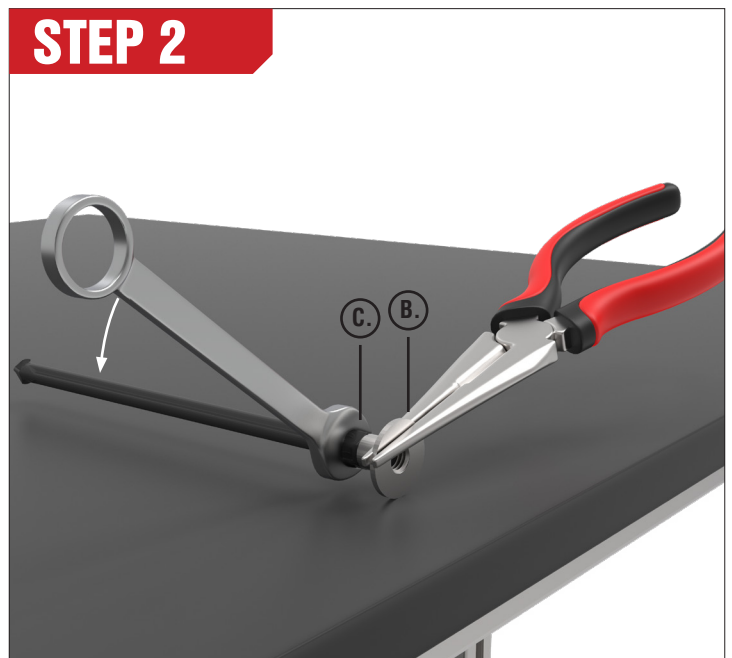
### TOOLS REQUIRED - 7/16" WRENCH, PLIERS

#### STEP 1



With the **nylon pin** (C) out, finger-tighten the **weld nut** (B) on top of the nylon pin — flange side up.

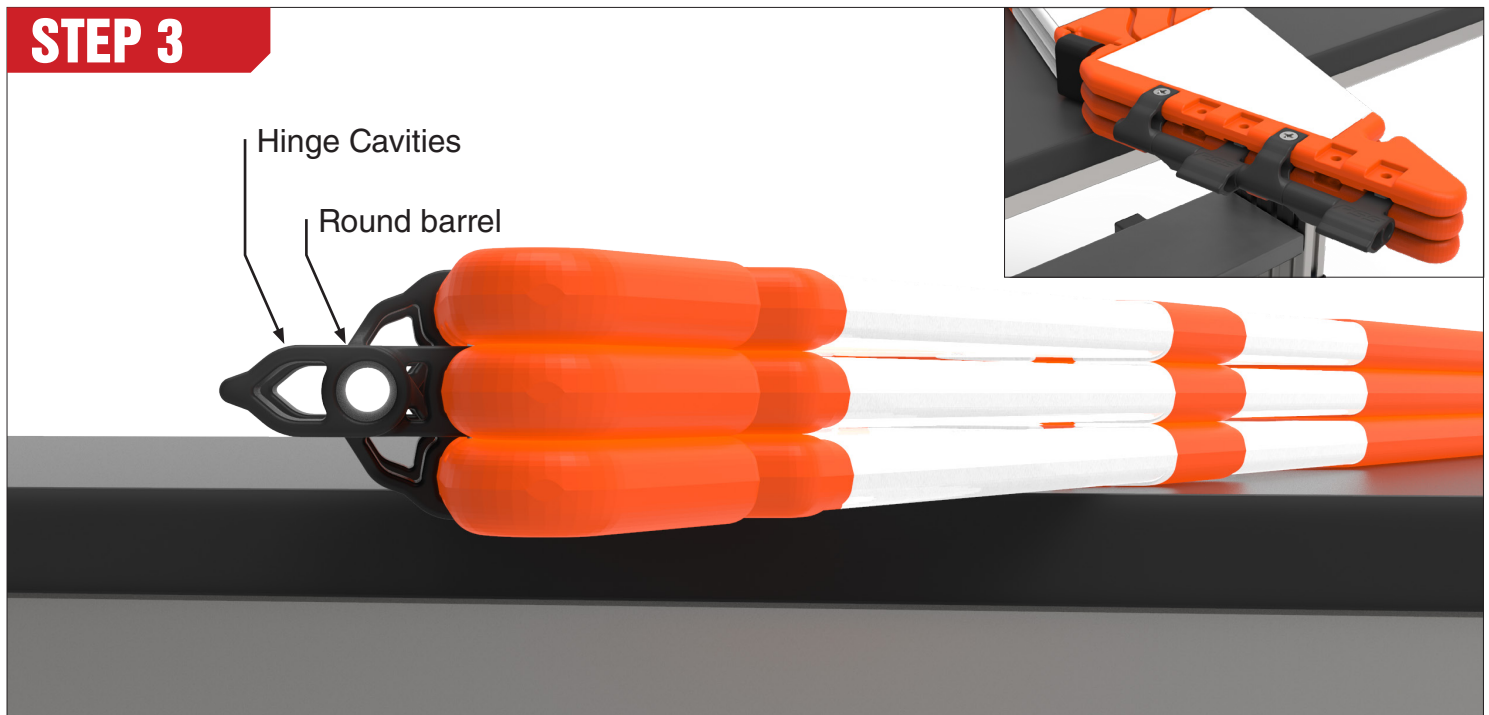
#### STEP 2



Grip the flange of the **weld nut** (B) with pliers and using a 7/16" wrench on the **nylon pin** (C), tighten an additional ¼ turn past finger-tight.

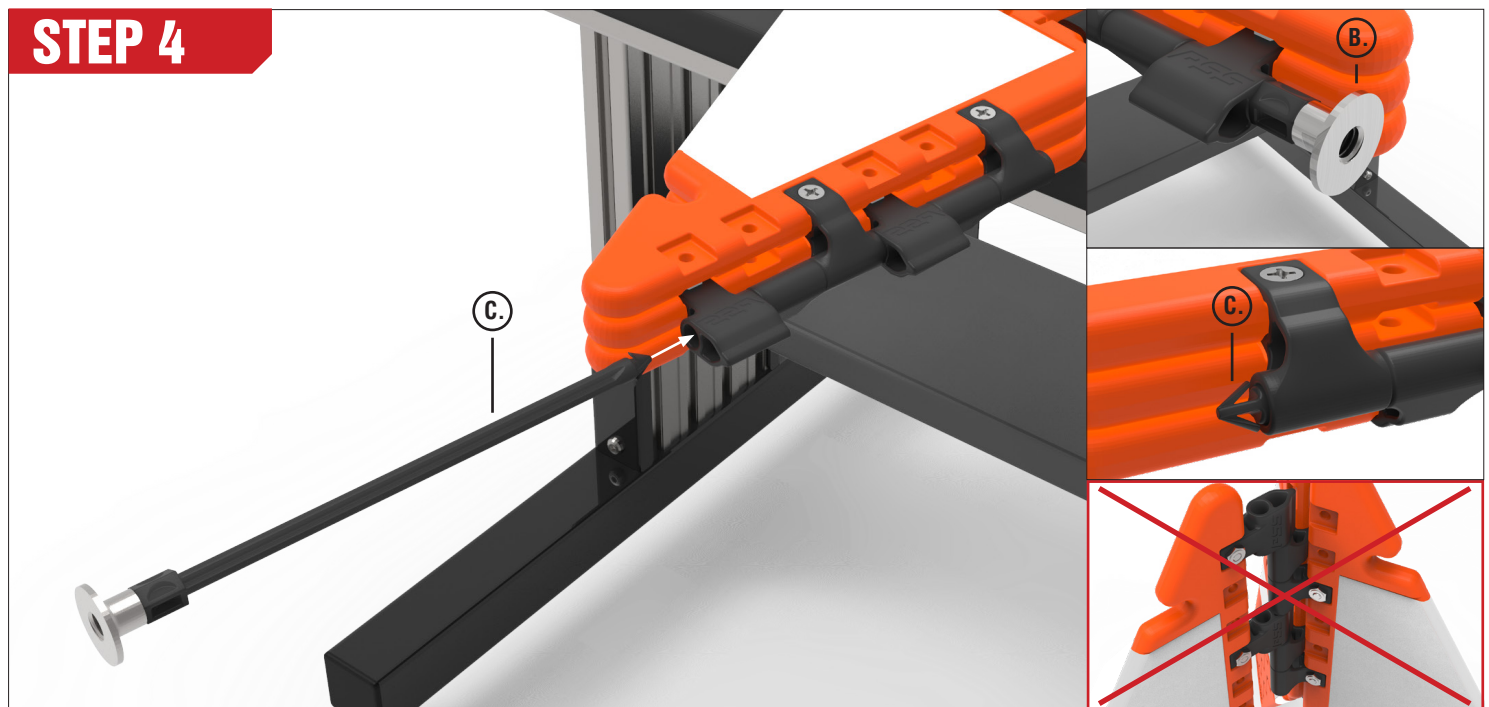
# FIRSTGARD™ PIN REPLACEMENT

## STEP 3



Align the round barrel holes on the **hinge components**.

## STEP 4



Insert the **nylon pin (C)** into the barrel of the hinge. The **weld nut (B)** should be on the top of the cone and the barbs of the nylon pin should point towards the bottom. **Note:** Be sure the nylon pin is going through the hinge component's **round barrel** rather than the open hinge cavities.

# FIRSTGARD™ HINGE REPLACEMENT

## HINGE COMPONENT REPLACEMENT

### PARTS NEEDED FOR FIRSTGARD HINGE REPLACEMENT



**Part A.**  
FirstGard Cone Panels  
Quantity - 1



**Part B.**  
Weld Nut  
Quantity - 1



**Part C.**  
Nylon Pin  
Quantity - 1



**Part D.**  
Hinge Components  
Panels A1 & A3  
Quantity - As Needed



**Part E.**  
Hinge Components  
Panels A2  
Quantity - As Needed



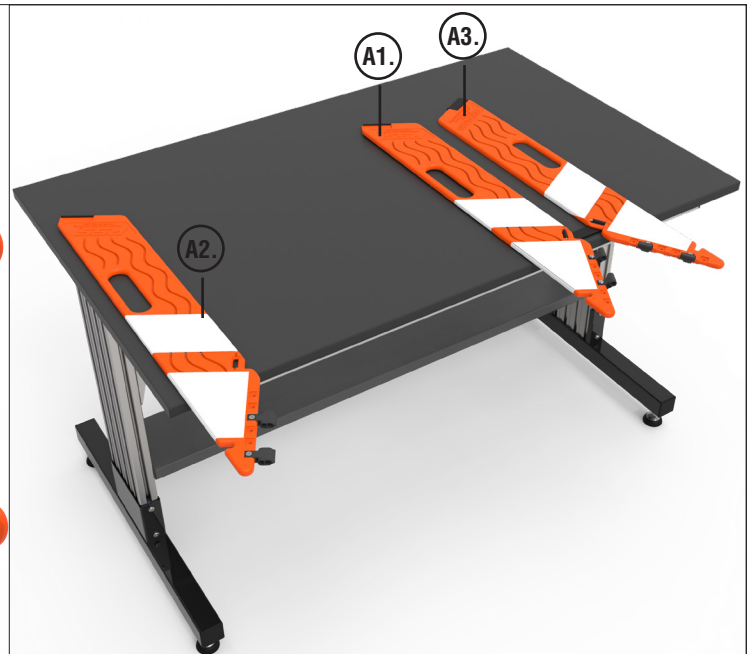
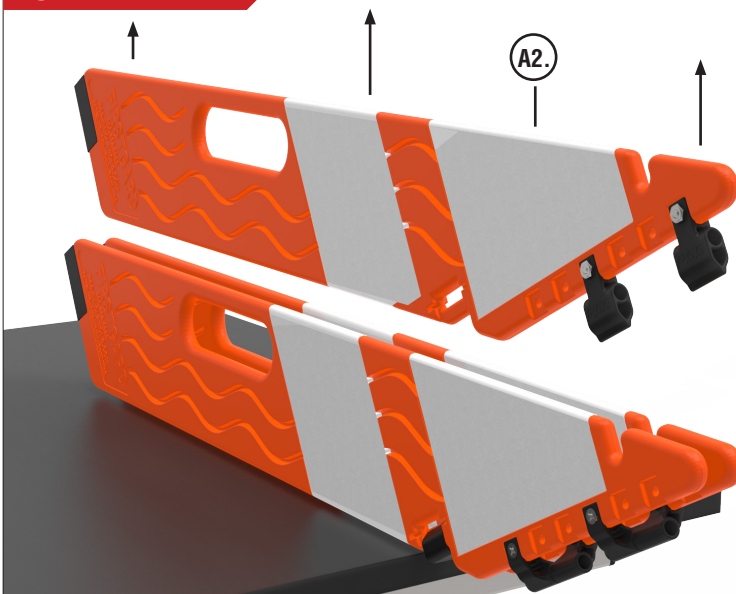
**Part F.**  
Screw  
Quantity -  
As Needed



**Part G.**  
Nut  
Quantity -  
As Needed

TOOLS REQUIRED - PHILIPS-HEAD SCREWDRIVER, 7/16" WRENCH, PLIERS

### STEP 1

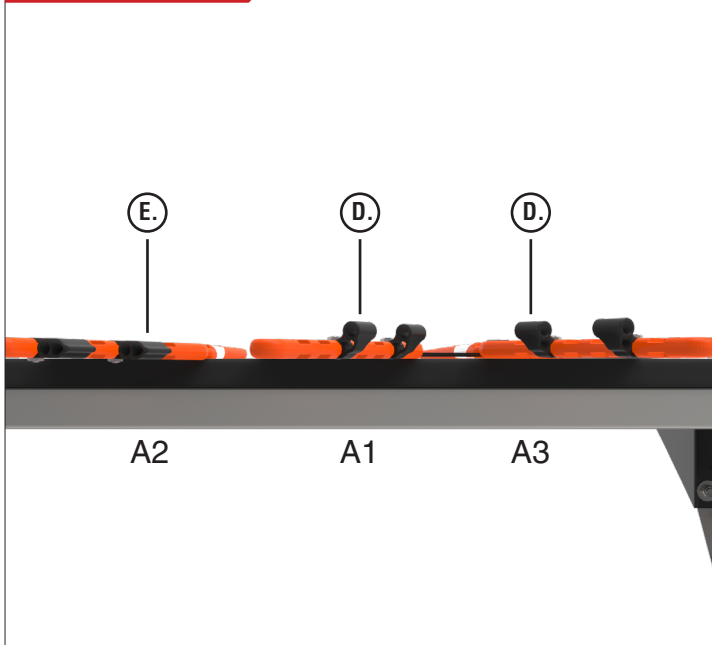


With the nylon pin removed, take out the **center panel** (A2) and set aside. Allow the two banded panels to lie flat on the table.



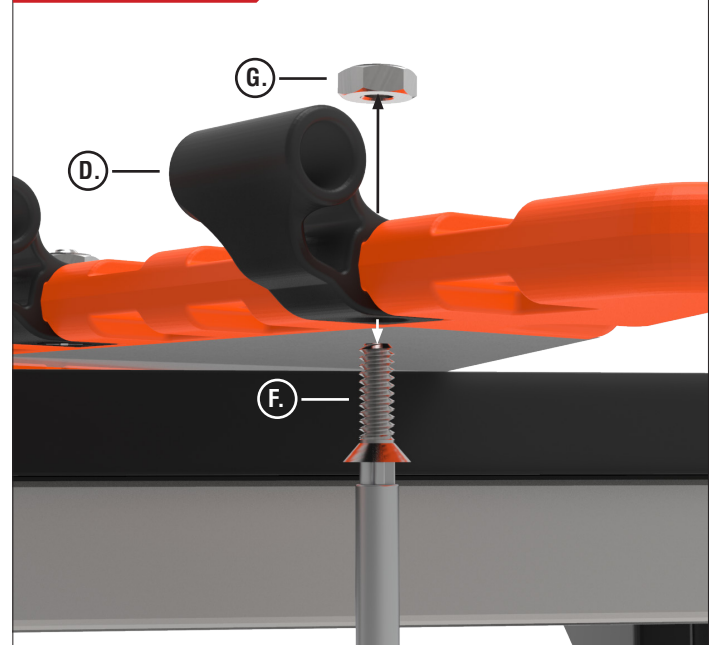
# FIRSTGARD™ HINGE REPLACEMENT

## STEP 2



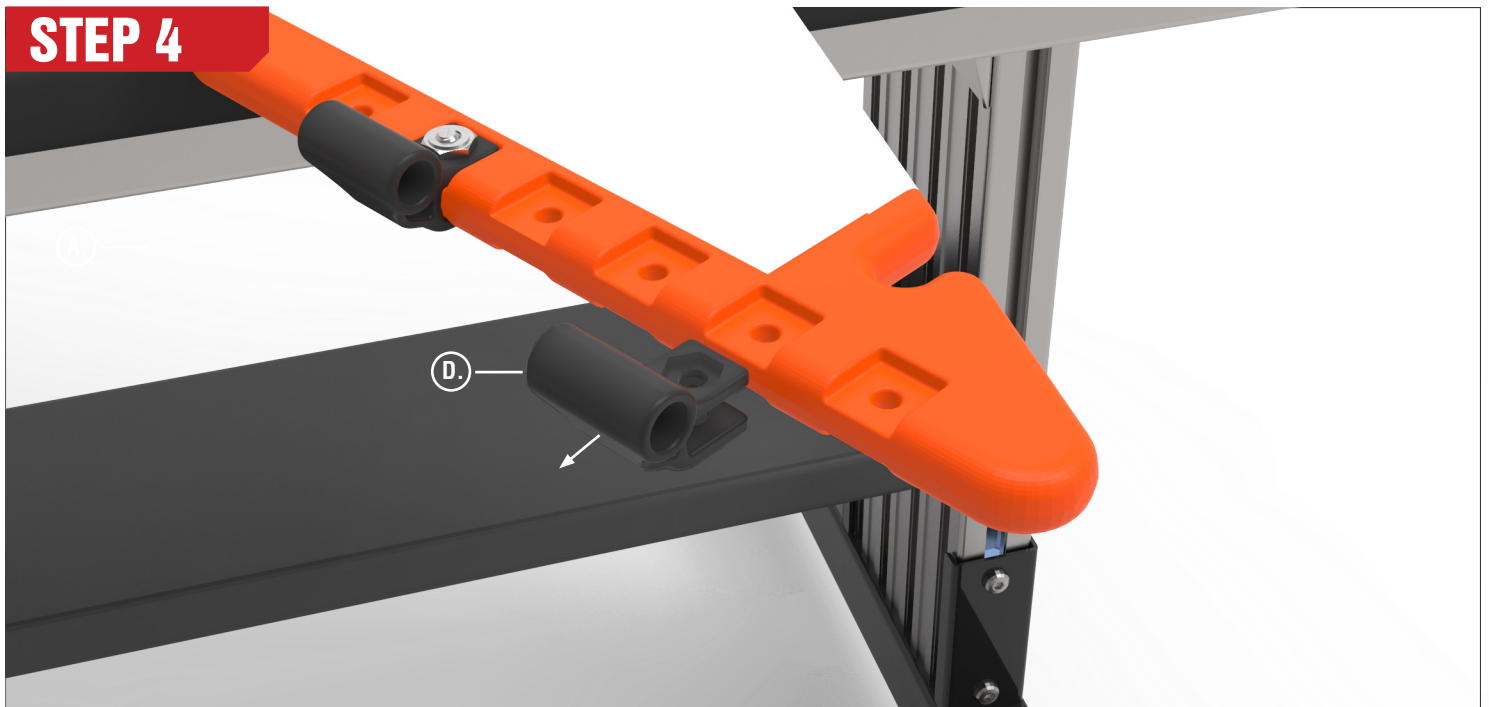
Assess which panel has a broken **hinge component** (D & E) **Note:** It is crucial that the orientation and slot location of the component matches the orientation and slot in the panel back into the same position as this will affect the alignment of the panels.

## STEP 3



Using a philips-head screwdriver, remove the metal **screw and nut** (F and G) from the broken **hinge component** (D).

## STEP 4



Slide the broken **hinge component** (D) off.

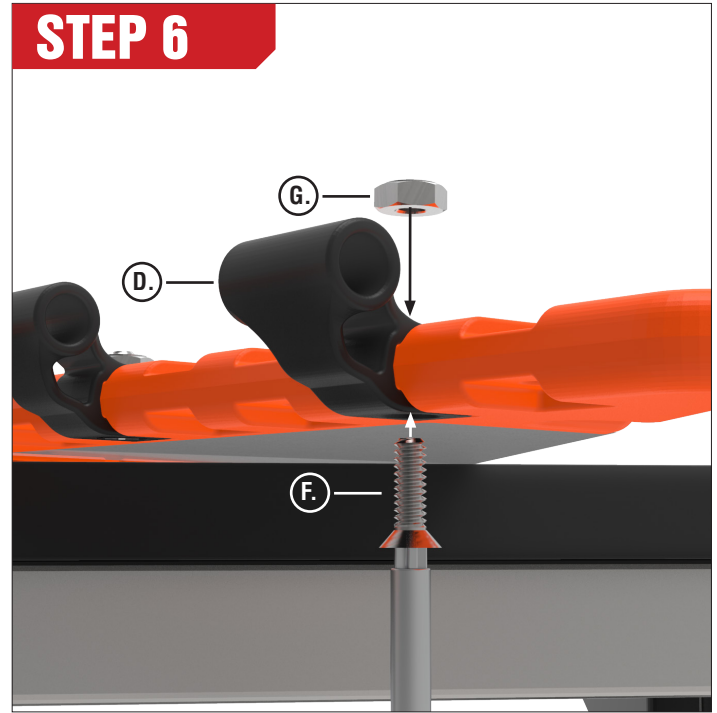
# FIRSTGARD™ HINGE REPLACEMENT

## STEP 5



Slide the new **hinge component** (D) onto the **FirstGard panel** (A1 or A3) in the same location and orientation it was removed.

## STEP 6



Place a **nut** (G) into the recess in the **hinge component** (D). Place a **screw** (F) into the opposite side of the hole of the hinge component. Using a wrench and screw driver, tighten the hardware. **Note:** Be sure to not overtighten hardware as it may damage the panel and/or the hinge component.

## STEP 7



Repeat steps 3-7 for all broken hinge pieces.

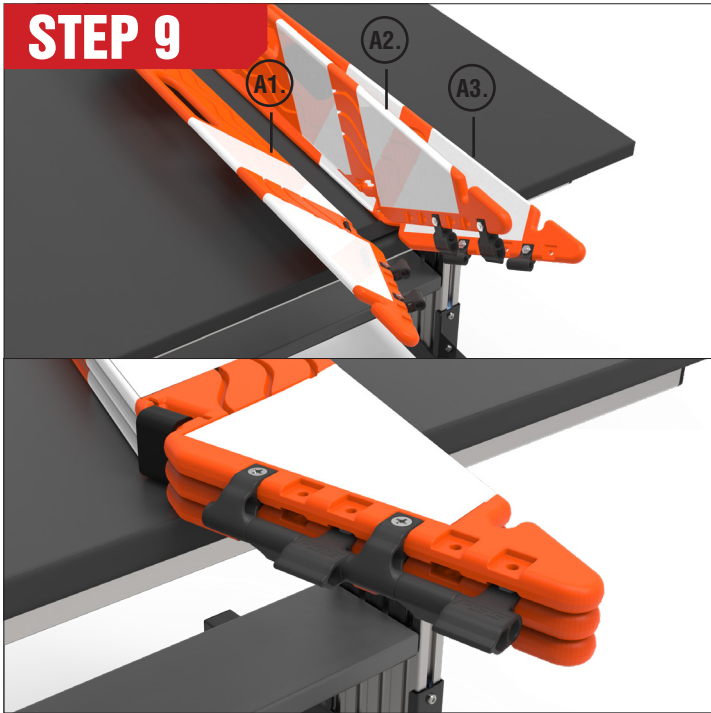
## STEP 8



Fold the two banded panels (**A1 and A3**) together leaving enough room for the third panel (**A2**) between. The hinge components should be facing inward.

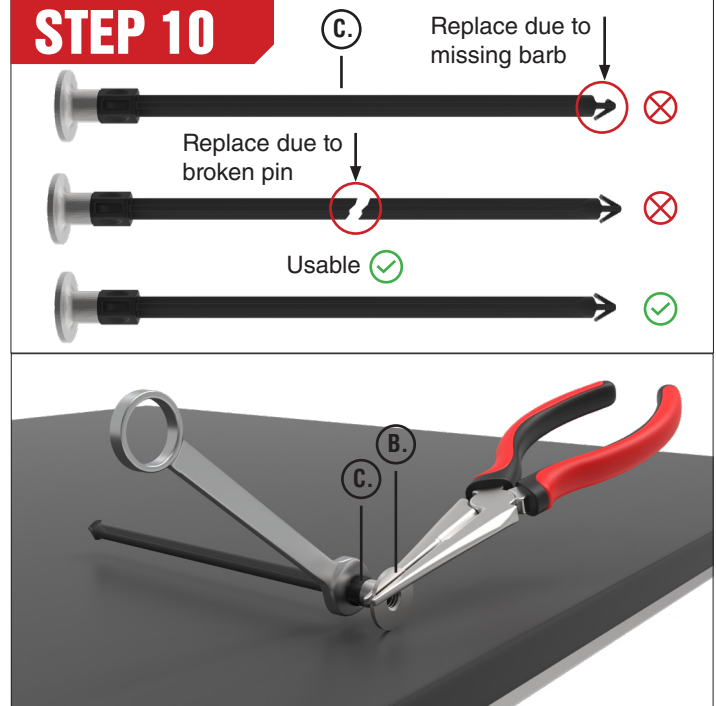
# FIRSTGARD™ HINGE REPLACEMENT

## STEP 9



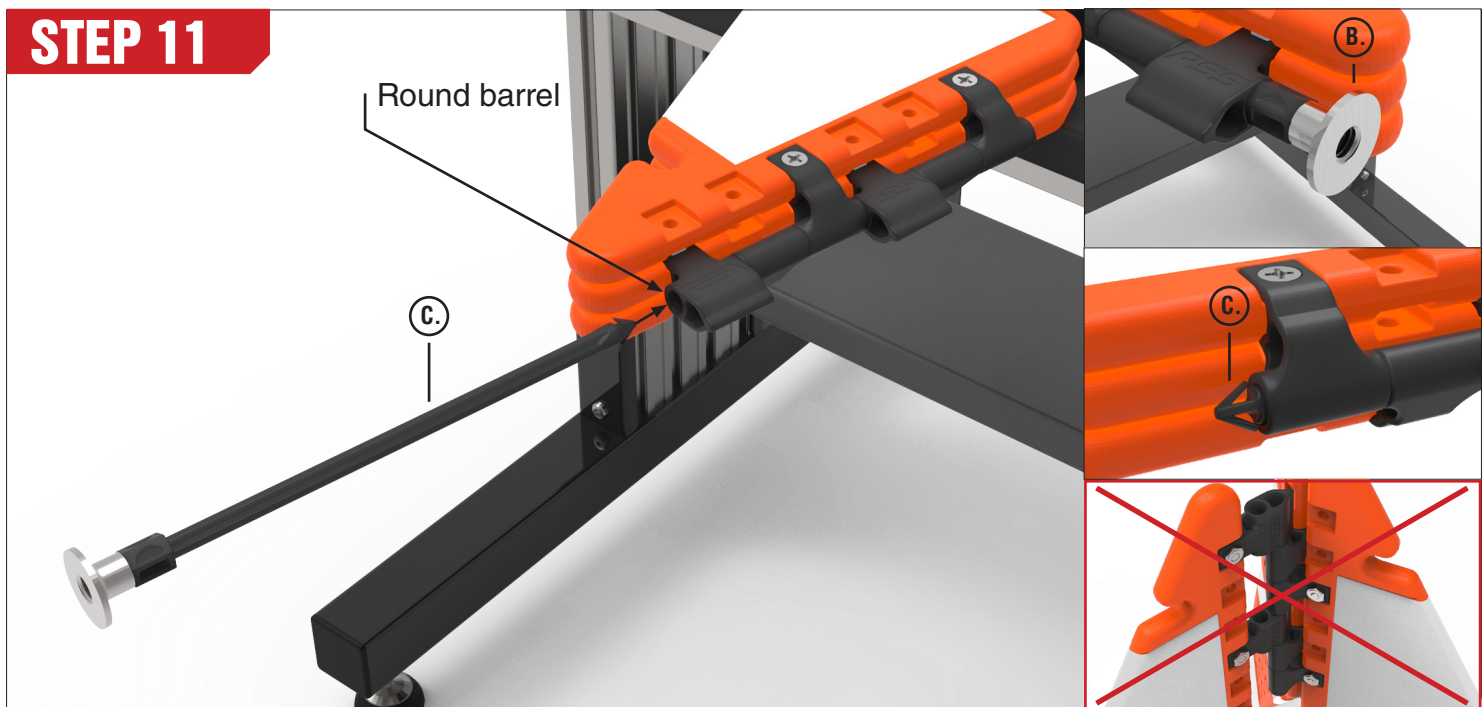
Lower the **disconnected panel** (A2) between the two **banded panels** (A1 and A3) and close all of the panels together. Align the round barrel on the hinge components.

## STEP 10



Assess if the current **nylon pin** (C) is intact. If the barbs or pin are not as shown, using a 7/16" wrench, finger-tighten **weld nut** (B) on top of the nylon pin—flange side up. Grip the flange with pliers and tighten it an additional ¼ turn past finger-tight.

## STEP 11



Insert the **nylon pin** (C) into the barrel of the hinge. The **weld nut** (B) should be on the top of the cone and the barbs of the nylon pin should point towards the bottom. **Note:** Be sure the nylon pin is going through the hinge component's **round barrel** rather than the open hinge cavities.



# FIRSTGARD™ BAND REPLACEMENT

## BAND REPLACEMENT

### PARTS NEEDED FOR FIRSTGARD HINGE REPLACEMENT



**Part A.**  
FirstGard Cone Panels  
Quantity - 1



**Part B.**  
Weld Nut  
Quantity - 1



**Part C.**  
Nylon Pin  
Quantity - 1



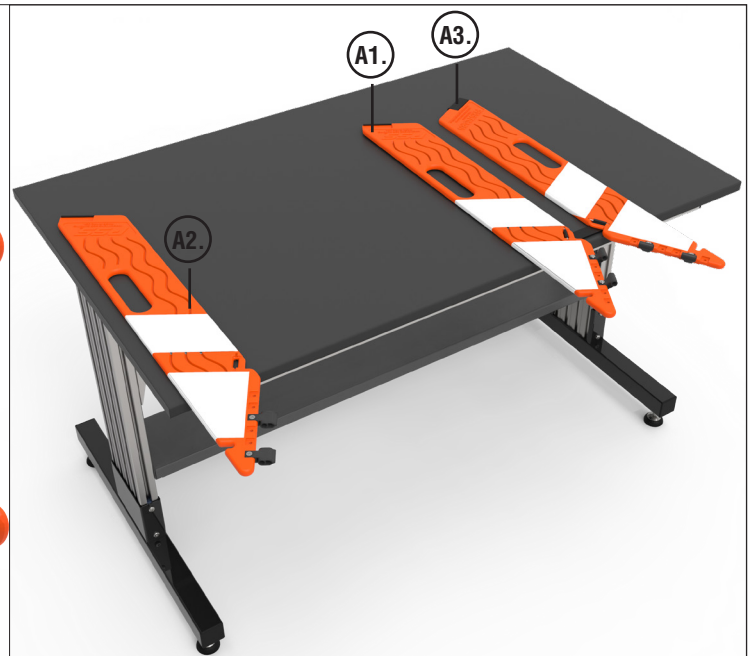
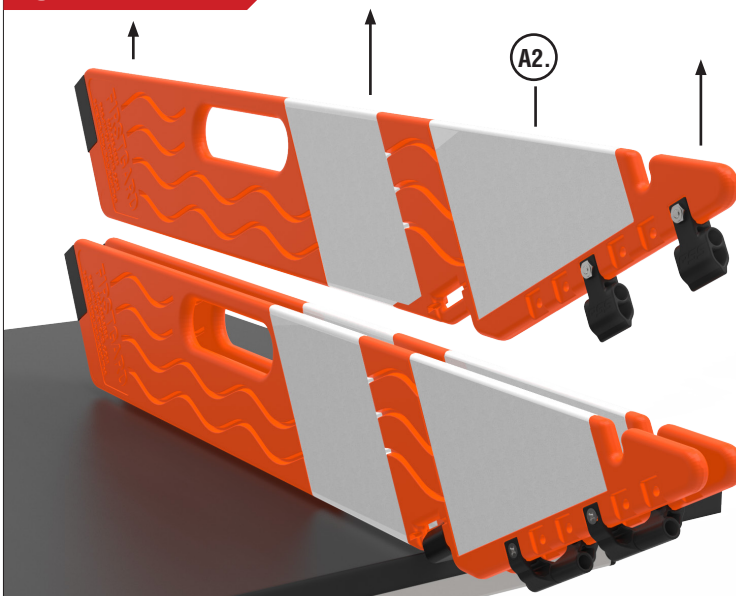
**Part H.**  
Band  
Quantity - 1



**Part I.**  
Roll Pin  
Quantity - 2

TOOLS REQUIRED - FLAT BLADE SCREWDRIVER, 7/16" WRENCH, PLIERS

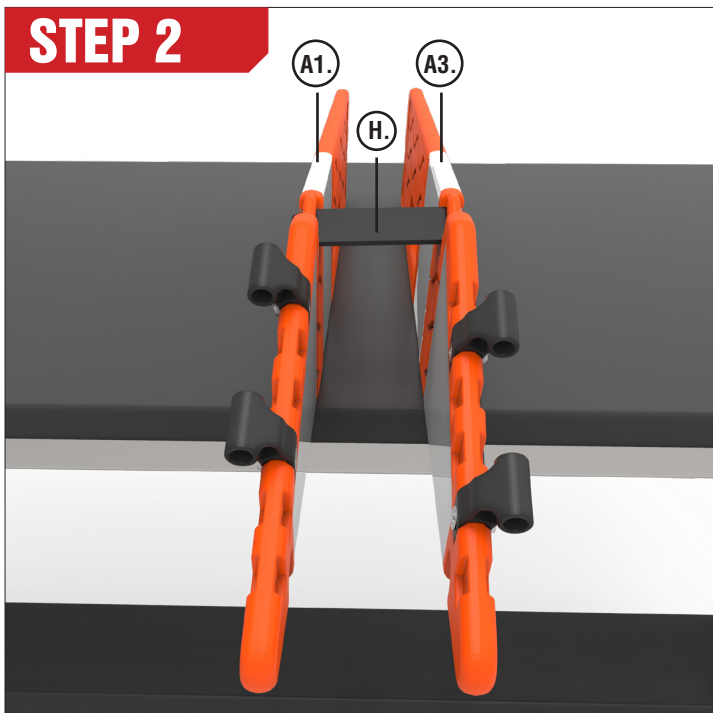
### STEP 1



With the nylon pin removed, take out the **center panel** (A2) and set aside. Allow the two banded panels to lie flat on the table. **Note: If your band is missing, please skip to step 4.**

# FIRSTGARD™ BAND REPLACEMENT

## STEP 2



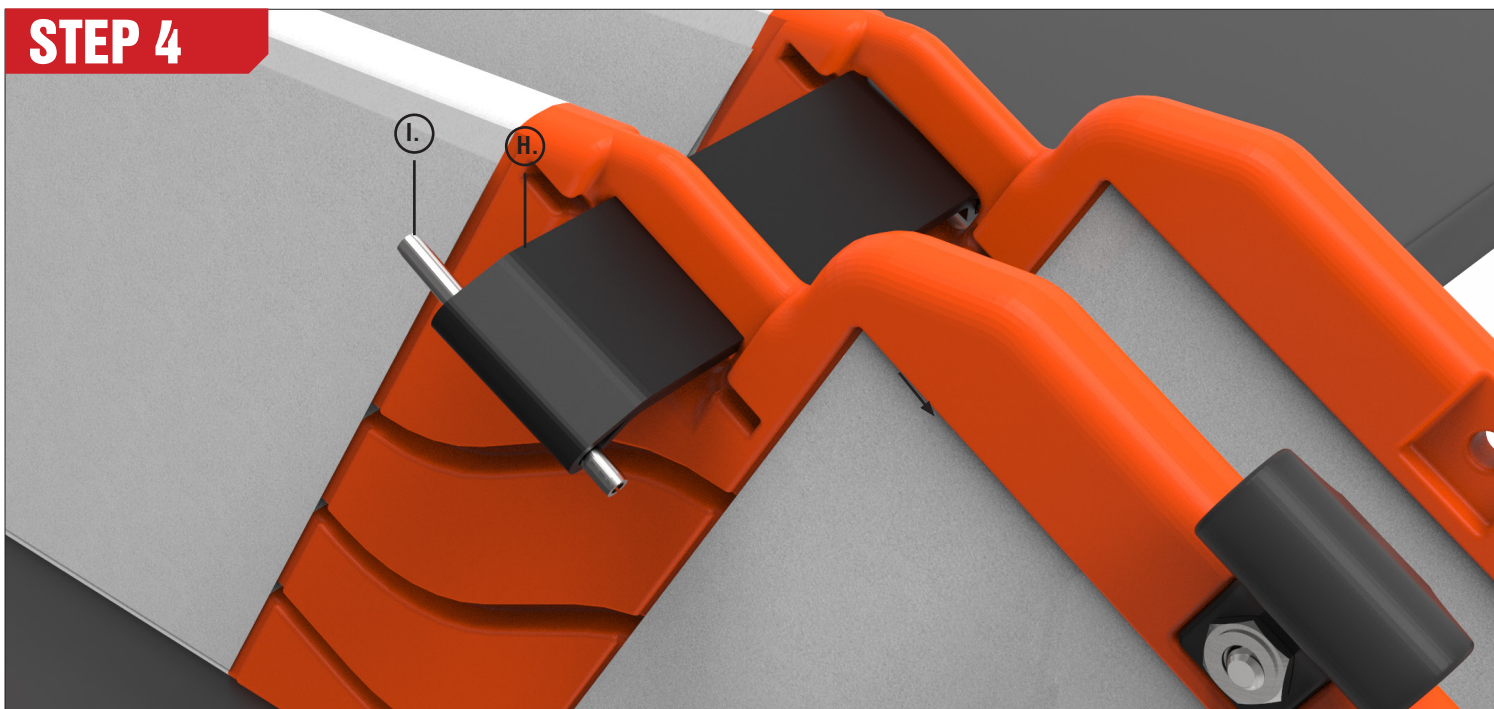
Position the two banded **FirstGard panels** (A1 and A3) so that the **band** (H) is facing upward and the hinge components are facing away from each other.

## STEP 3



Using a small flat blade screwdriver, push the **roll pin** (I) through the back of the panel. Be sure to not press on the **band** (H) as it could damage the band.

## STEP 4



Slide the **roll pin** (I) out from the loop of the **band** (H). Repeat step for for the other panel.

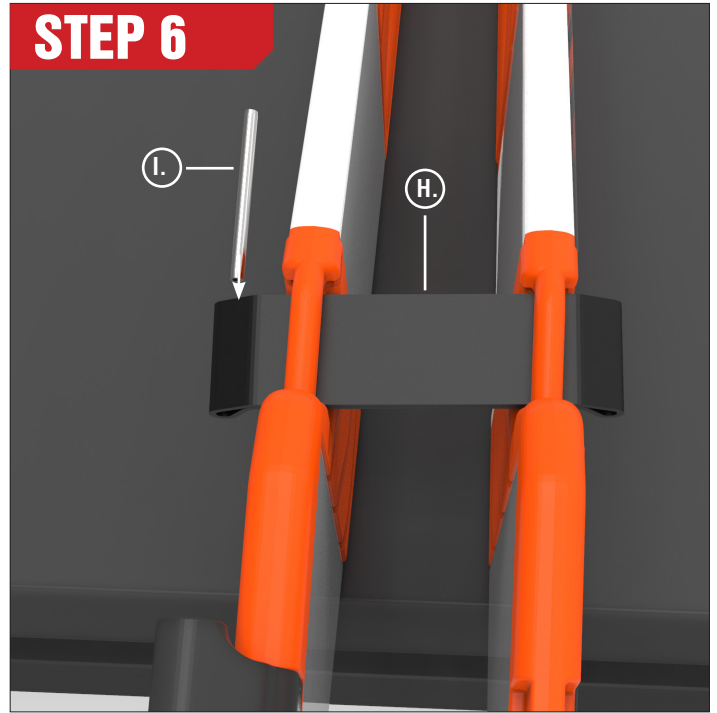
# FIRSTGARD™ BAND REPLACEMENT

## STEP 5



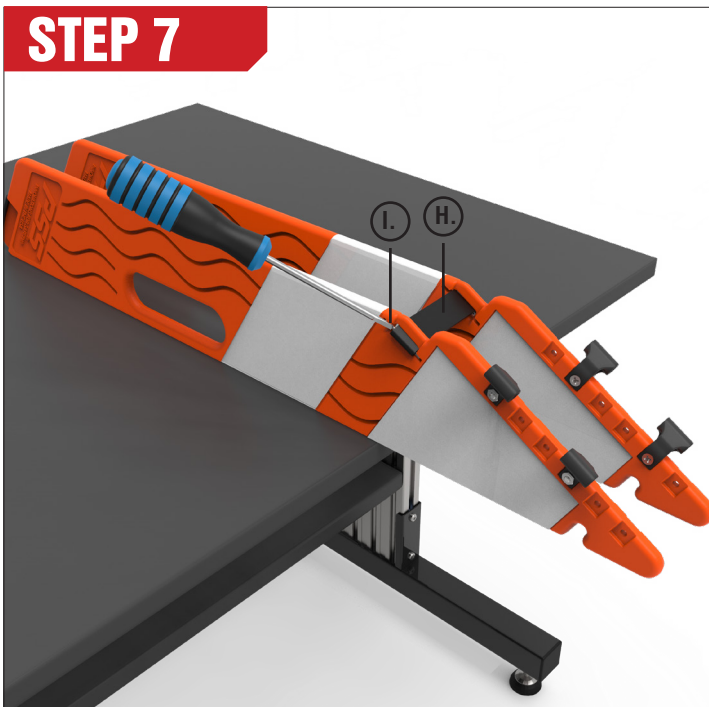
Be sure that both roll pins are removed before this step. Hold the **FirstGard panels** (A1 and A3) together with the barrels of the hinges pointed outward. Thread the **band** (H) through both slots.

## STEP 6



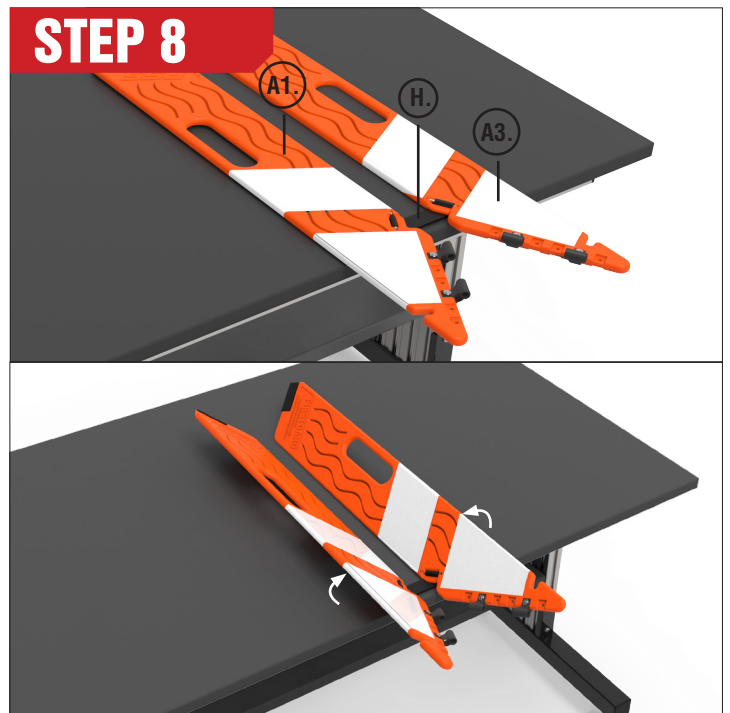
Insert a **roll pin** (I) into one side of the **band** (H). Press the roll pin into its pocket.

## STEP 7



Insert the **roll pin** (I) into the other side of the **band** (H). Press the roll pin into its pocket until it clicks into place. You may need to press the roll pin with a flat blade screwdriver to fully click it into place. Be sure to press on the pin itself as pressing on the pin through the band may damage the band.

## STEP 8

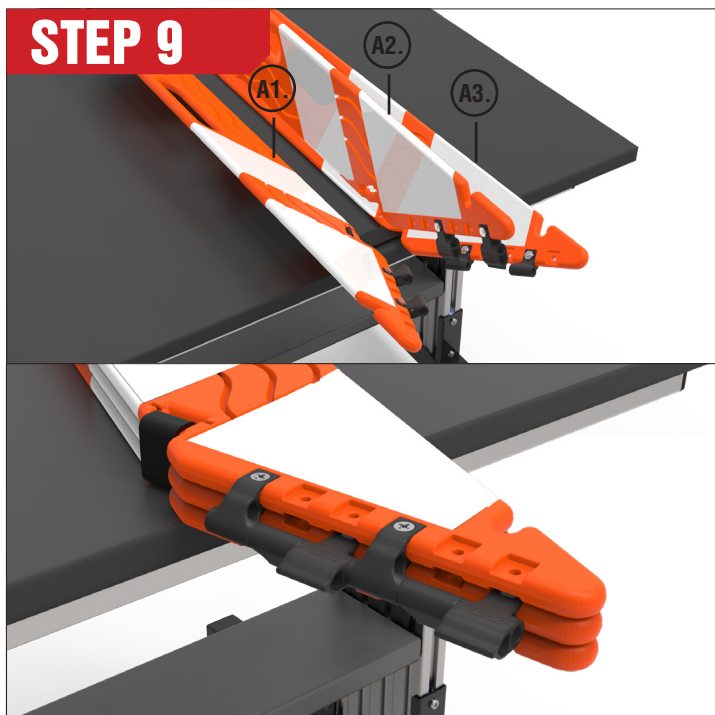


Fold the two **banded panels** (A1 and A3) away from each other so that they lay flat on your work surface and the band is flat. Begin folding the two banded panels together leaving enough room for the third panel between. The hinge components and roll pins should be facing inward.



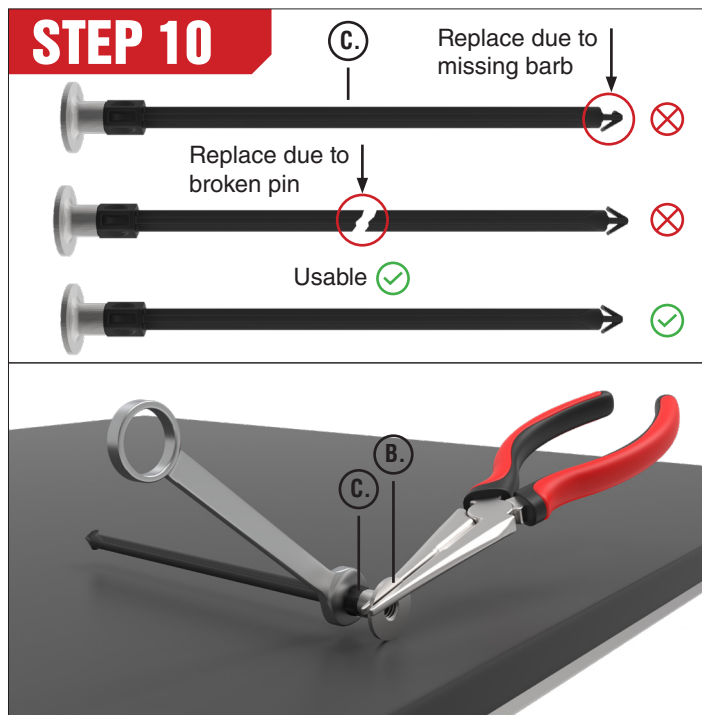
# FIRSTGARD™ BAND REPLACEMENT

## STEP 9



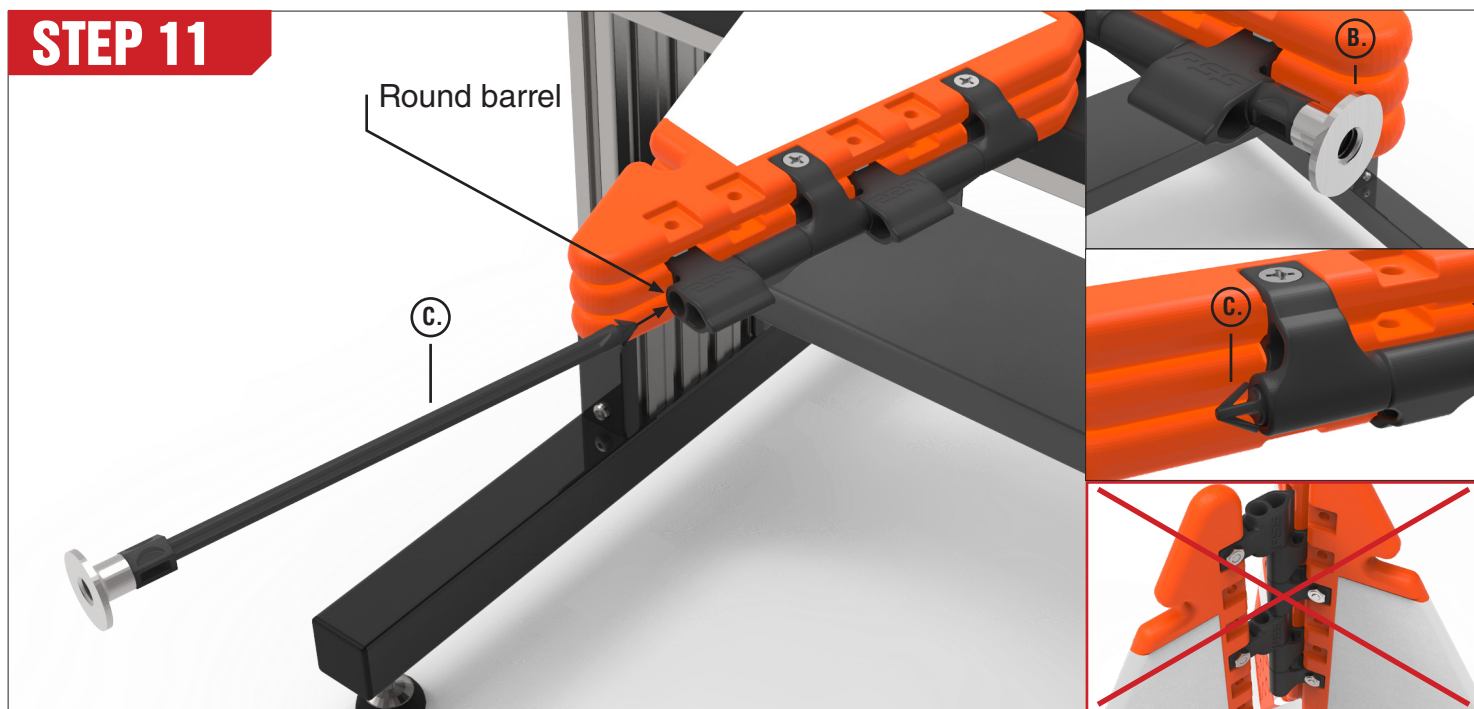
Lower the **disconnected panel** (A2) between the two **banded panels** (A1 and A3) and close all of the panels together. Align the round barrel on the hinge components.

## STEP 10



Assess if the current **nylon pin** (C) is intact. If the barbs or pin are not as shown, using a 7/16" wrench, finger-tighten **weld nut** (B) on top of the nylon pin—flange side up. Grip the flange with pliers and tighten it an additional 1/4 turn past finger-tight.

## STEP 11



Insert the **nylon pin** (C) into the barrel of the hinge. The **weld nut** (B) should be on the top of the cone and the barbs of the nylon pin should point towards the bottom. **Note:** Be sure the nylon pin is going through the hinge component's **round barrel** rather than the open hinge cavities.



**CONTACT:**

Call 800.662.6338 to speak with a Customer Service Representative.

**HOURS:**

8 AM to 5 PM (E.T.)  
Monday through Friday

Follow us on:



*Innovations for Safety®*

We are a proud member of:

