



LANEGARD3™

FOLDING TYPE III BARRICADE

— ASSEMBLY INSTRUCTIONS —



FHWA LETTER:

Letter: WZ-336

Tested to Manual for Assessing Safety Hardware
(MASH) Test Level: 3

CONTACT:

Call 800.662.6338 to talk to a Customer Service Representative.

HOURS:

8 AM to 5 PM (E.T.)
Monday through Friday



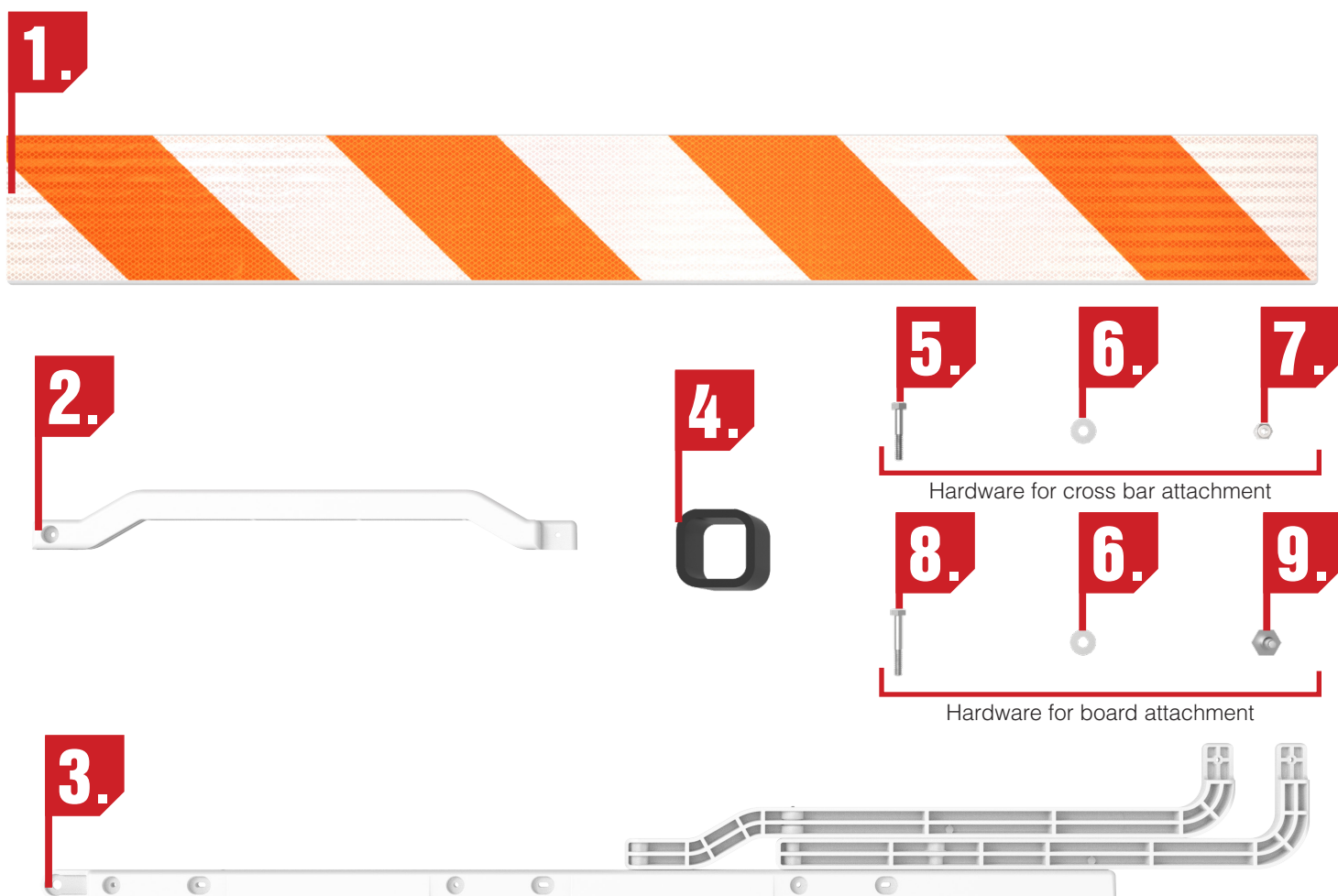
TABLE OF CONTENTS

PAGE
03 | UPRIGHT
ASSEMBLY

PAGE
07 | FOLDING OF
LANEGARD3

PAGE
05 | BOARD
ATTACHMENT

LANEGARD3™ COMPONENTS



- 1. Wave Centerboard* - Quantity 3
- 2. Cross-Bars - Quantity 2
- 3. Upright Assembly - Quantity 2
- 4. Anti-Skid Feet - Quantity 4 *(Enlarged to show detail)*
- 5. 1/4-20 x 1.5" Hex-Bolts - Quantity 4 *(Enlarged to show detail)*

- 6. Flat Washer - Quantity 16 *(Enlarged to show detail)*
- 7. Lock Nut - Quantity 4 *(Enlarged to show detail)*
- 8. 1/4-20 x 2" Hex-Bolts - Quantity 12 *(Enlarged to show detail)*
- 9. Pallet Nut - Quantity 12 *(Enlarged to show detail)*

*Visit PSS-Innovations.com to view retroreflective sheeting options

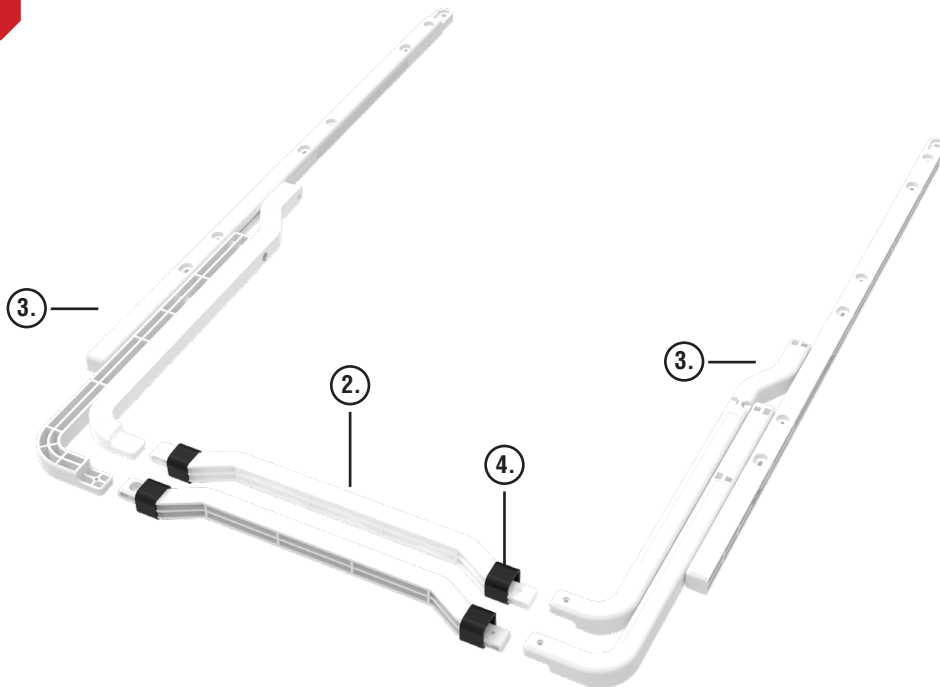
LANEGARD3™ ASSEMBLY INSTRUCTIONS



LANEGARD 3 ASSEMBLY

TOOLS REQUIRED - 1/4" HEX KEY, 7/16" WRENCH

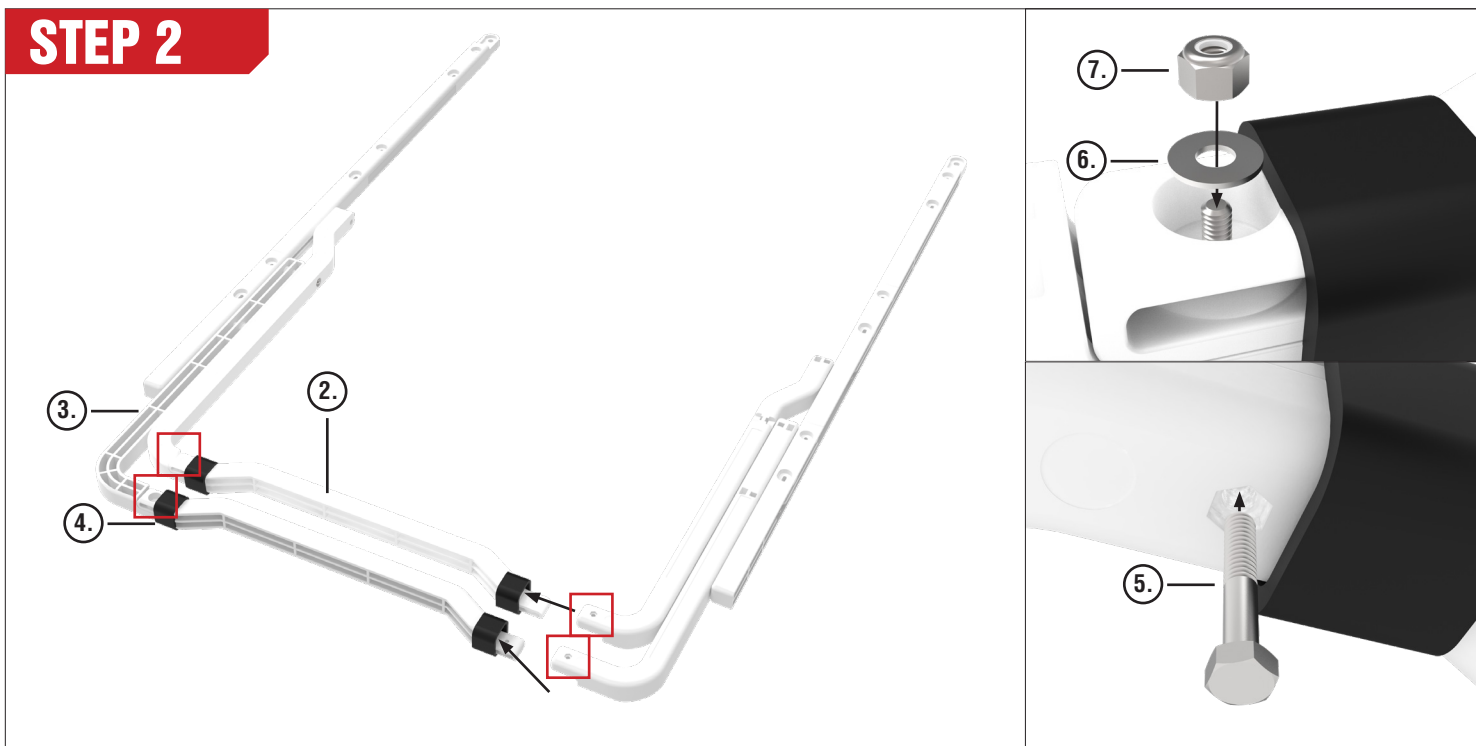
STEP 1



Lay out **Upright Assembly** (3), **Cross-Bars** (2), and **Rubber Feet** (4), on a flat, clean surface. Attach optional **Rubber Feet** (2 per cross-bar) prior to assembly. Slide the **Rubber feet** onto the **Cross-Bars** so that the bolt hole is accessible.

LANEGARD3™ ASSEMBLY INSTRUCTIONS

STEP 2



Connect the two ends of the **Cross-Bars** (2) to the front and back legs using **1/4-20 x 1.5" bolts** (5), **washers** (6) and **lock nuts** (7). Make sure base hardware hex-bolt fits into hex pocket on the upright, depicted in the lower right image above. Move the **Rubber feet** (4) outward onto the **Upright Assembly** (3). Be sure that the feet can still maintain full contact with the ground and are far enough out to maximize stability.

STEP 3



Repeat steps 1-2 on the three other crossbar connection points on the **Upright Assembly** (3).

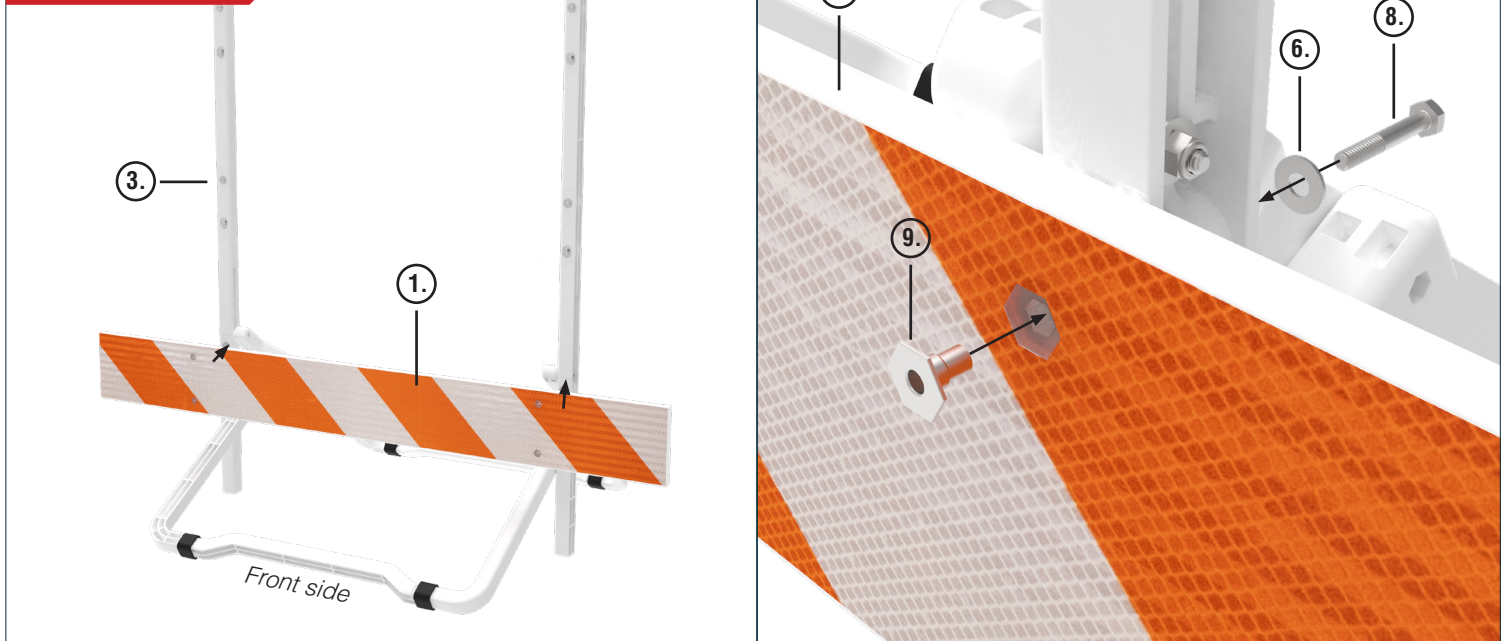
LANEGARD3™ ASSEMBLY INSTRUCTIONS

STEP 4



To unfold LaneGard 3: Stand assembled unit up. Push the **upper cross bar** (2) away from you with your foot. Open the legs completely until the back leg lock in the open position. This step must be completed before attaching the Wave Centerboards as it will assist with proper installation. **NOTE:** The leg that was pushed away is now the back leg and the leg that moved toward the operator is now the front leg.

STEP 5



Attach boards to front side of **Upright Assembly** (3). Be sure that the orientation of the centerboard matches the orientation of the sheeting installed. Attach bottom board first; start with top hole on Upright for each board. Install boards using **Pallet Nuts** (9), **washers** (6), and **1/4-20 x 2" bolts** (8). Insert **hex head bolt** and **washer** through Upright and centerboard into the **Pallet Nut**. Repeat for the remaining boards. Keep **Pallet Nut** from turning by using the 1/4" hex key. Tighten bolts with ratchet until snug.

LANEGARD3™ ASSEMBLY INSTRUCTIONS

STEP 6



Repeat the previous step for the three other connection points on the Wave centerboard and the upright.

STEP 7



Repeat steps 5-6 on the two remaining boards.

STEP 8



To fold for transport and storage: flex the **back legs** (3) inward, pull the upper section of the back legs inward, and upward, as shown below, then fold the device. This disengages the legs' mechanical locking mechanism and enables the leg to fold. Failure to flex the legs inward may result in damage to LaneGard3.



CONTACT:

Call 800.662.6338 to talk to a Customer Service Representative.

HOURS:

8 AM to 5 PM (E.T.)
Monday through Friday

Follow us on:



We are a proud member of:

