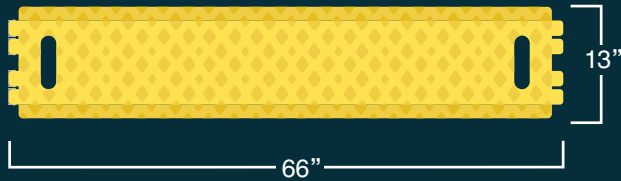


ROADQUAKE® 2F

TEMPORARY PORTABLE RUMBLE STRIPS

ROADQUAKE® 2F TPRS BENEFITS:

Designed to reduce accidents and save lives, RoadQuake 2F TPRS alerts distracted drivers to changing road conditions like work zones and checkpoints.



Showing RoadQuake 2F TPRS (1/2 Strip Shown)

TEMPORARY:

- » Ideal for work zones where daily installation and removal is required.
- » Quick installation and removal. No cleanup required.
- » Does not require glue or fasteners

PORTABLE:

- » Transport RoadQuake® 2F TPRS with handling equipment like RoadQuake® CRIB® Carrier or RAPTOR® Rumble Strip Handling Machine.
- » Manually deploy and retrieve by a two-person crew.

DURABLE:

- » 3-5 year life under normal conditions.
- » Suitable for use in the rain and in temperatures as low as 0° F and as high as 180° F.
- » For use in posted speed limits up to 80 MPH.
- » 3 year limited warranty

US Patent No. 7,736,087. Other Patents Pending



ROADQUAKE 2F TPRS FEATURES:

- » RoadQuake 2F generates the same level of sound and vibration as milled strips.
- » 13" W x 3/4" H x 132" L when unfolded. Covers the width of an entire lane.
- » Folds to a compact 66" length. Weighs 105 lbs.
- » Ergonomic handles make installation and storage easy. The non-slip textured surface helps to keep RoadQuake 2F TPRS in place.
- » Bevels on both sides of RoadQuake take the guesswork out of a correct installation.
- » Meets Section 6F.87 of the MUTCD, 2009 Edition.
- » RoadQuake 2F can have a colored cap of rubber to meet specifications. Available in yellow, orange, white.

RoadQuake[®] 2F

TEMPORARY PORTABLE RUMBLE STRIPS

INSTALLATION GUIDANCE:

To reduce the possibility of “upside down” deployments, we have added several warnings to each RoadQuake TPRS:

- » Embedded text reads THIS SIDE DOWN on the bottom side of the strip in four places, near the handles.
- » A red stripe runs down the center of the bottom side most of the length of the strip.
- » Red “INSTALL THIS SIDE DOWN” warning labels, in English and Spanish, are applied to two brackets of each strip.

The warnings send a clear message to workers who deploy RQ TPRS: the text, labels, and red stripe should face the roadway. If strips are deployed correctly, workers will not see the warnings. If strips are deployed incorrectly, bottom side up, workers will see all of them and must re-deploy the strips.

In addition to the warnings that appear on each strip, a “Caution!” postcard in both English and Spanish accompanies each strip at time of shipment. The card shows users how to deploy RoadQuake TPRS correctly, or “right side up”, with no warnings visible.

Field tests in active work zones indicate that the warnings effectively direct workers to deploy strips correctly.



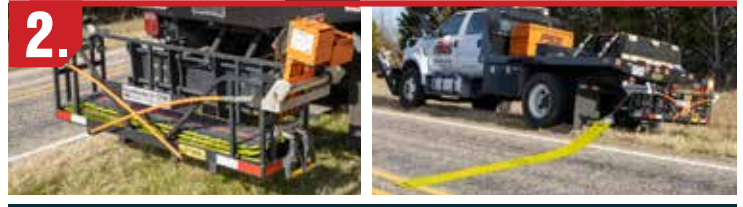
Embedded Text and Red Stripe on Bottom of RoadQuake 2F TPRS (1/2 Strip Shown)

ROADQUAKE[®] 2F DEPLOYMENT METHODS:

RoadQuake TPRS may be deployed and retrieved manually, or by using the PSS RoadQuake handling equipment for faster, easier, and safer use.

1. Deploy and retrieve RQ TPRS manually with RoadQuake[®] T-Handle.
2. Deploy and retrieve RQ TPRS with RoadQuake[®] 2F CRIB[®] Carrier. Or deploy with CRIB and retrieve with CRIB and RoadQuake[®] 2F Retrieval System.*
3. Use RoadQuake[®] RAPTOR[®] Rumble Strip Handling Machine to transport, deploy, realign, and retrieve RQ TPRS. RAPTOR keeps workers safely off the road.

For more information, please see our website, pss-innovations.com or our line of product guides



*CRIB and Retrieval System sold separately.

We are a proud member of:

